



UNIT-e Student Records Tracking Solution (SRTS) Internet Builder

Providing customers with the ability to produce dynamic database driven web pages for internal and external presentation.

What does it do?

Built on top of the powerful UNIT-e architecture, Internet Builder provides the ability for users to write their own web pages by designing simple reports. These can be used with an inbuilt secure login feature where the content is sensitive, or as anonymous users pages where the data is to be made available for public viewing on the Internet.

UNIT-e Columbus

UNIT-e Columbus is a pre-packaged set of standard web pages written for Internet Builder that provides the basis for a college MIS intranet. It provides, for example, student, course and enrolment information along with timetable details and the ability to send amendments to college administration staff.

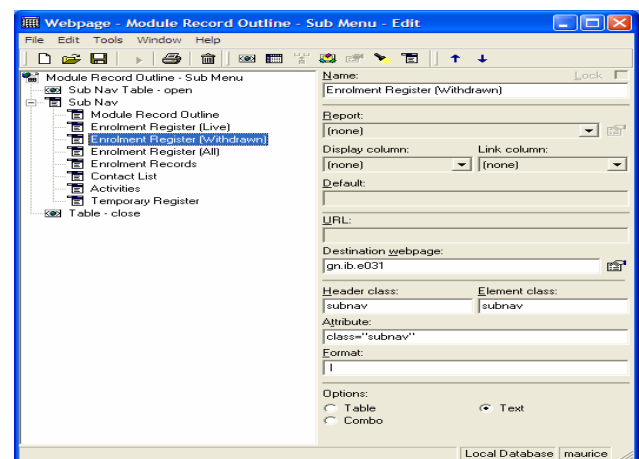
Module Reference	Module Name	(1) Live	(2) Completed	(3) Withdrawn	(4) Transferred	Other Total	(1+3) Live + W/D	(1+3+4) Live + W/D + Trans
01/02_ABD_ISR	01/02 Art and Design	2	0	0	0	2	2	7
01/02_ABD_ISR	01/02 Art and Design - Non HE	11	0	0	0	1	12	11
01/02_CA_ISR	01/02 Creative Arts	6	0	0	0	1	7	6
01/02_CA_ISR	01/02 Creative Arts - Non HE	11	0	0	0	0	11	11
01/02_CA_ISR	01/02 Creative Arts Y1	2	0	0	0	1	3	7
01/02_CA_ISR	01/02 Creative Arts Y1 - Non HE	11	0	0	0	0	11	11
01/02_CDT_ISR	01/02 Craft, Design and Technology	2	0	0	0	1	3	7
01/02_CDT_ISR	01/02 Craft, Design and Technology - Non HE	11	0	0	0	0	11	11
01/02_HE_ISR	01/02 Home Economics	6	0	0	0	1	7	6
01/02_HE_ISR	01/02 Home Economics - Non HE	11	0	0	0	0	11	11
01/02_MW_ISR	01/02 Metal work	6	0	0	0	1	7	6
01/02_MW_ISR	01/02 Metal work - Non HE	11	0	0	0	0	11	11
01/02_NW_ISR	01/02 Needlework	6	0	0	0	0	6	6
01/02_NW_ISR	01/02 Needlework - Non HE	10	0	0	0	0	10	10
01/02_TD_ISR	01/02 Technical Drawing	2	0	0	0	2	2	7
01/02_TD_ISR	01/02 Technical Drawing - Non HE	11	0	0	0	0	11	11

UNIT-e Internet solution

By using the anonymous user or internet option you can develop database driven web pages for public view within any login restrictions. This is particularly useful for providing general information based on data within your MIS system, for example, a staff contact, a telephone list or a course prospectus.

Powerful design environment

As with all UNIT-e Builder tools, Internet Builder has been designed to be straightforward to use and yet very powerful. The design interface allows to you to construct search forms and data presentations without the need for detailed programming knowledge. It provides the ability of adopting a consistent college look and feel.



UNIT-e Intranet solution

When developing your own web pages, the intranet solution will ensure that only authorised users can view data. Because Internet Builder uses the common UNIT-e architecture, all the standard security features are enforced allowing you to limit the data accessed. For example, data relating to a user's department or at field level, i.e. hiding details such as National Insurance number from a particular group of users.



the total education management solution