



UNIT-e Student Records & Tracking Solution (SRTS) Information Interface Standard Edition

Designer Tools

Basic Layout: Enables creation of forms using drag and drop functionality.

Basic Field Properties: Adjust basic properties of fields such as position and size.

Wizards: Enables creation of simple data entry form based on a database table.

Proforma Migration: Enable an existing UNIT-e Proforma definition to be used to create an Information Interface.

Data Fields

Text Box: Display the contents of a text field.

Date Box: Display the contents of a date field with Calendar look-up.

ListBox: Display the contents of a look-up field.

Link: Display the contents of a hyperlink field as a hyperlink.

Look-up: Provide a look-up form to selection a UNIT-e look-up field.

Check-box: Display the contents of a Boolean field as a tick-box.

Tools-box

Label: Add additional description labels.

Reverse Link: Display a UNIT-e reverse link this for example would allow a specific address to be shown.

Hotlink: Provide a link to an external file based on the location stored in a hotlink field. Dependant on licensing provide capture options.

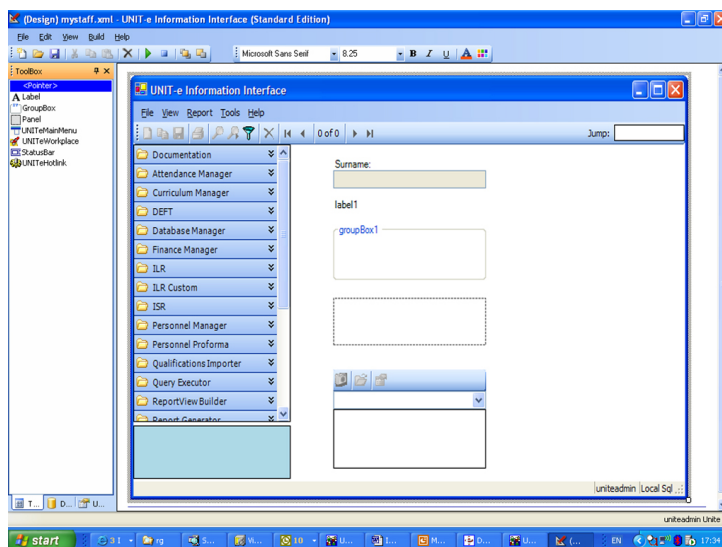
Panel: Provide a scrolling panel in order to group controls logically and help design forms deeper or wider than the visible area.

Group Box: Group together fields within a named section of the screen.

Status Bar: Display a status bar providing information and progress messages.

Main Menu: Display a Menu providing access to tools and record management.

Workplace Launcher: Display an application launch bar providing access to UNIT-e and other applications.



Standard Edition tools