

## Business Manager – PFR Analysis

The Business Manager software suite is fully integrated within the wider UNIT-e information management system. Business Manager provides a wide range of functionality to support your organisation's business planning, performance monitoring and ILR cycles:

- Business Manager – Curriculum Planning (England)**  
 Assists your planning process with functionality to forecast Demand Led Funding income from the SFA and YPLA and any other expected income. Additional routines enable expenditure forecasts to be incorporated into the model

- Business Manager – English Analysis Suite (EAS)**  
 Provides routines to understand and report on the funding 'claim', which is inherent in an ILR file

- Business Manager – PFR Analysis**  
 Enables the import and subsequent analysis of the data provided by the Provider Funding Report (PFR) for the monthly Employer Responsive cycle of ILR returns

Once each Employer Responsive ILR has been processed by the SFA funding team in Coventry, the work-based learning provider is sent a Provider Funding Report for each funding stream. This PFR report is in the form of a spreadsheet, therefore correlating it with the underlying data in your UNIT-e system is somewhat problematic. The UNIT-e Business Manager – PFR Analysis software will import this data from that spreadsheet into UNIT-e tables enabling full and precise reporting and analysis.

The image shows four separate report windows, each displaying a table with columns: Name, Year, Collection, On prog YTD cash, Bal pays YTD cash, Achv pays YTD cash, ALS YTD cash, and Total YTD cash.

Name	Year	Collection	On prog YTD cash	Bal pays YTD cash	Achv pays YTD cash	ALS YTD cash	Total YTD cash
Business	2008	W07	3851	0	0	0	3851
Information Technology	2008	W07	2457	0	0	0	2457
Science	2008	W07	3509	0	0	0	3509
Vocational Studies	2008	W07	14646	0	0	0	14646

Name	Year	Collection	On prog YTD cash	Bal pays YTD cash	Achv pays YTD cash	ALS YTD cash	Total YTD cash
Berts Bakery	2008	W07	5701	0	0	0	5701
Cotswold Quality Foods	2008	W07	9524	0	0	0	9524
IT Services Ltd	2008	W07	9238	0	0	0	9238

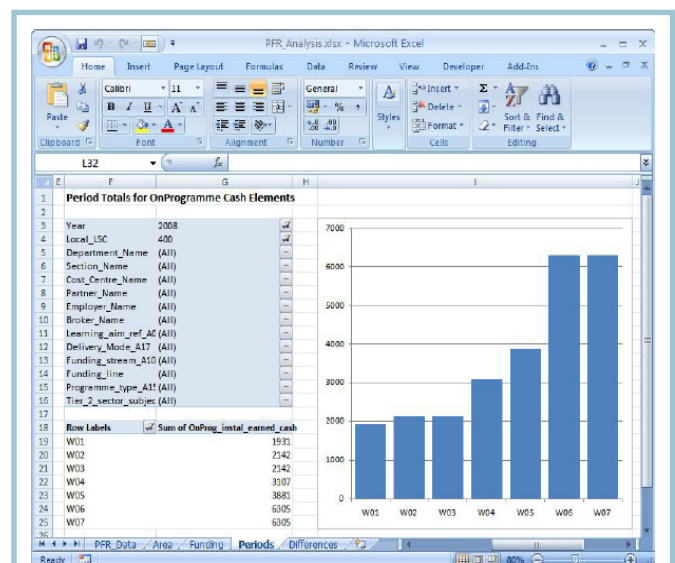
  

Funding line	Year	Collection	On prog YTD cash	Bal pays YTD cash	Achv pays YTD cash	ALS YTD cash	Total YTD cash
16-18 Apprenticeships	2008	W07	17034	0	0	0	17034
19-24 Apprenticeships	2008	W07	7429	0	0	0	7429

Name	Year	Collection	On prog YTD cash	Bal pays YTD cash	Achv pays YTD cash	ALS YTD cash	Total YTD cash
Anne Miles	2008	W07	3063	0	0	0	3063
Bert Miles	2008	W07	2638	0	0	0	2638
Charles Miles	2008	W07	3448	0	0	0	3448
David Miles	2008	W07	1712	0	0	0	1712
Edward Miles	2008	W07	1871	0	0	0	1871
Francis Miles	2008	W07	4152	0	0	0	4152
Gary Miles	2008	W07	2493	0	0	0	2493
Harry Miles	2008	W07	2578	0	0	0	2578
Jan Miles	2008	W07	2409	0	0	0	2409

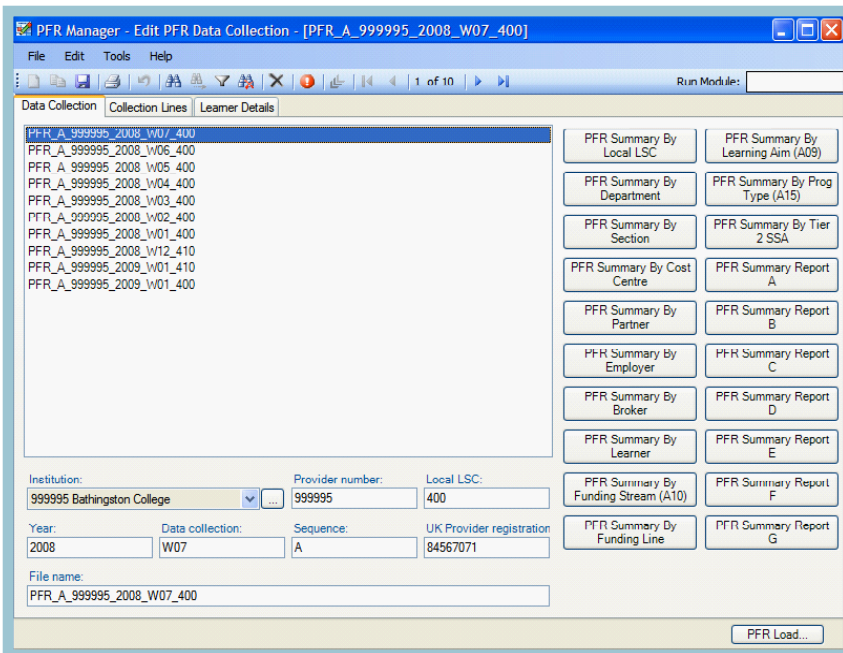
PFR Manager Reports - a number of analysis reports are available others can be easily added by the organisation



Detailed PFR Analysis is available from an Excel spreadsheet. A large number of reports are available

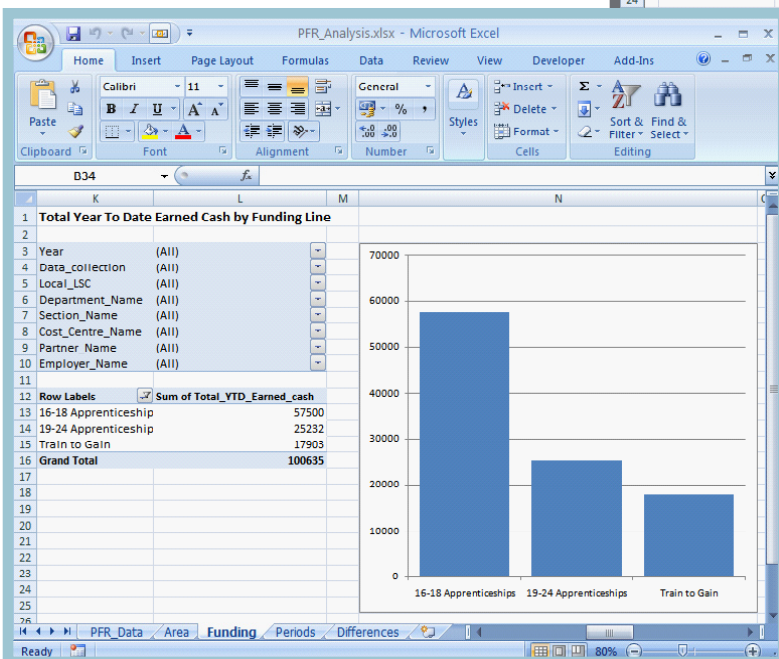
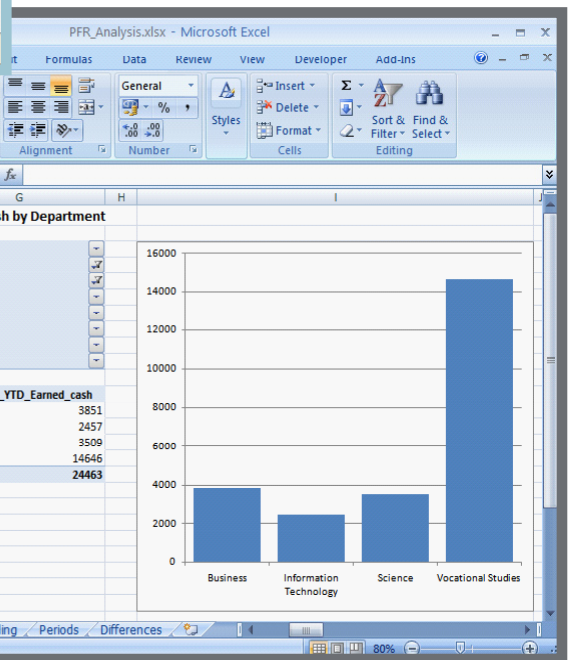
### Benefits of Business Manager PFR Analysis:

- Provides dedicated management screens and tabular reports, allowing complex data to be easily imported, interrogated and analysed
- Correlates the PFR for each funding stream, along with the underlying data within your UNIT-e MIS database enabling rich and detailed funding analysis to be undertaken
- Includes a comprehensive set of conventional tabular reports that can be supplemented by the organisation. In addition, a suite of more sophisticated graphical templates has been created for use within UNIT-e Tools for Excel.



Screen used to view the data that has been loaded and to run a number of standard analysis reports.

Detailed PFR Analysis is available from Excel spreadsheets.  
A large number of reports are available.



For more information, please contact your Capita FHE Account Manager