

# CAPITA

## Case Study Flexibility is the key for City College Brighton and Hove

City College Brighton and Hove has selected Capita FHE's UNIT-e Student Record and Tracking System. The solution is helping the college update and maintain records on 9000 students and simplify processes such as enrolment and reporting.

Matt Whelan, Head of MIS, City College Brighton and Hove said that they selected the Capita solution because of its proven track record. "We chose UNIT-e because we knew it offered us reliability. It was also extremely important for us to have a system flexible enough at the front-end to support our college's processes. The UNIT-e interface has allowed us to create our own screens so we can make them as simple as possible for our staff to use."

This ability to customise screens has made the college's student registration process simpler as UNIT-e follows the existing processes. No new procedures need to be learnt and once the data is on the system it can be reused throughout the different departments which will come into contact with the learner.

“ We wanted a fully integrated system and it was important that we only had to enter information once ”

explains Andy Williams, who heads up Corporate Services at Brighton and Hove.

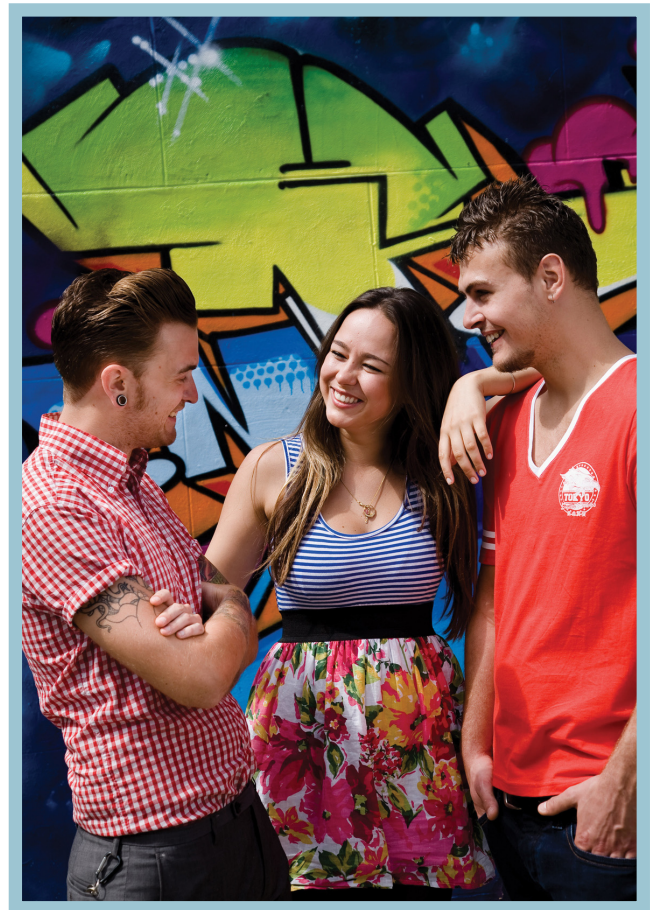
The college produces a number of reports that rely on data held in UNIT-e. This includes the production of the college's Individualised Learner Record (ILR), which is a collection of data about learners that is linked to the college's funding. Changes to the ILR, such as a new course starting up, will have an impact on funding so it's important for the college to report on this information accurately. "The system helps us to produce our ILR much more simply," said Matt Whelan. "This used to be a complex process that took us about half a day; now it takes us half an hour!"

The college has also been very happy with the transition to using UNIT-e and the ongoing support from Capita FHE.

“ We have managed to switch to UNIT-e without any impact on staff or students. When you bear in mind how integral the system is for every process in the college, this is a pretty impressive task ”

Matt Whelan, Head of MIS, City College Brighton and Hove

Matt Whelan said. "The consultants from Capita FHE were excellent and were prepared to move at our speed. It's the kind of flexibility that really impressed the staff here. The close relationship we built with Capita FHE staff made a difference to the success of the project."



Further and Higher Education  
5 Watermoor  
Cirencester  
Gloucestershire  
GL7 1LT

01285 647500  
enquiries@capitafhe.co.uk  
www.capita-fhe.co.uk